

Supplementary Materials

Taylor Smith¹, Bodo Bookhagen¹, and Forest Cannon²

¹Institute for Earth and Environmental Sciences, Universität Potsdam, Germany

²Geography Department, University of California, Santa Barbara, USA

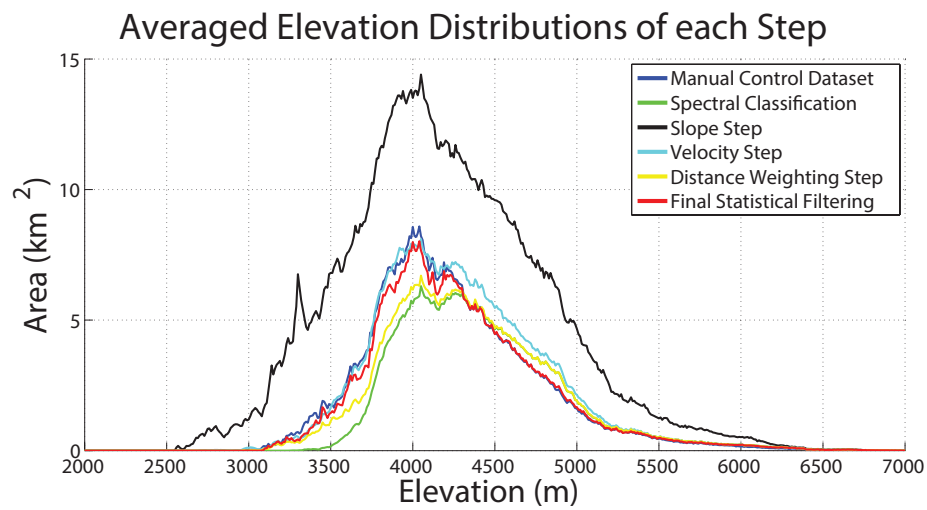


Fig. 1. Bulk elevation distributions after each step of the algorithm. Note the large overclassification by the initial Slope step, which is largely rectified at low elevations by the Velocity step. The Velocity step, however, misclassifies areas at high elevations, which is rectified by the distance weighting step and the final statistical corrections.

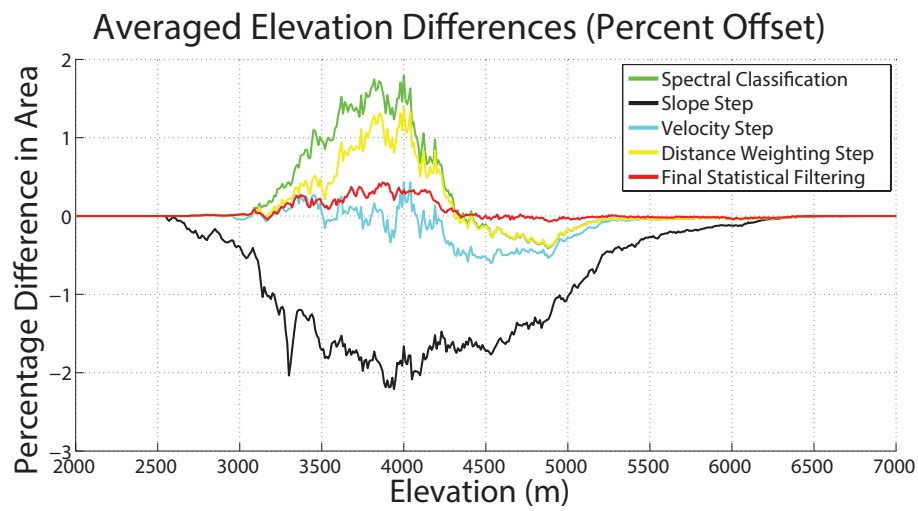


Fig. 2. Averaged elevation differences after each step of the algorithm, as compared to a manual control dataset. Similarly as above, there is large overclassification by the initial Slope step, which is largely rectified at low elevations by the Velocity step. The Velocity step, however, overclassifies high elevation areas, which is rectified by the distance weighting step and the final statistical corrections. The final results are well matched with the manual control dataset.